



EFL201

2000kg 4-wheel Li-ion Counterbalance Forklift



- 80 V Li-Ion battery forklift truck designed around I/C implemented chassis
- High ground clearance and big tires for perfect handling and traction in every environment
- Great ergonomic design with spacious legroom, adjustable steering wheel and comfortable bucket seat
- Simple layout with easy access to the main components for practical maintenance
- New mast with unimpeded view ensuring operation safety
- Wide selection of Li-Ion battery and charger to meet wide range of applications



| Manufacturer | | | EP |
|----------------------------------|-------|-------|-------------|
| Model designation | | | EFL201 |
| Drive unit | | | Electric |
| Load center distance | c | mm | 500 |
| Service weight | | kg | 3137 |
| Height, mast lowered | h1 | mm | 2020 |
| Lift height | h3 | mm | 3000 |
| Height, mast extended | h4 | mm | 4028 |
| Length to face of forks | l2 | mm | 2272 |
| Overall width | b1/b2 | mm | 1080 |
| Fork dimensions | s/e/l | mm | 40×122×1070 |
| turning radius | Wa | mm | 2100 |
| Travel speed, laden/unladen | | km/ h | 11/14 |
| Lifting speed, laden/unladen | | m/s | 0.25/ 0.3 |
| Lowering speed, laden/unladen | | m/s | 0.43/ 0.45 |
| Max. gradeability, laden/unladen | | % | 12/15 |
| Drive motor rating S2 60 min | | kW | 6 |
| Battery voltage/nominal capacity | | V/Ah | 80/150 |

FEATURE

80V Li-ion battery offering powerful performance

The EFL201 adopts EP's in-house 80V/150Ah lithium-ion battery and 80V/35A integrated charger as standard, giving operators the benefit of fast and opportunity charging, zero emission and zero maintenance. Besides, the 80 voltage motor offers higher power efficiency than regular 48 voltage motor, delivering great productivity and performance.



Newly designed mast for better visibility

The mast is newly designed with fewer oil tubes in the line of sight. Operators can easily see fork tips, load and the surrounding area at all times and transport goods safely.



Ergonomic strengths for operation comfort

The EFL201 is designed with great ergonomics in mind. The accelerator pedal is moved forward by 40mm to provide more legroom. Combined with the adjustable steering wheel and comfortable seat, operators therefore enjoy fatigue-free work and improve handling capacities.



High ground clearance and water resistance

The EFL201 comes with high ground clearance of 120mm and solid rubber tyres, which enables use on uneven surfaces. Its water-protected design can also withstand all weather conditions and makes it easy to transport goods outdoors.

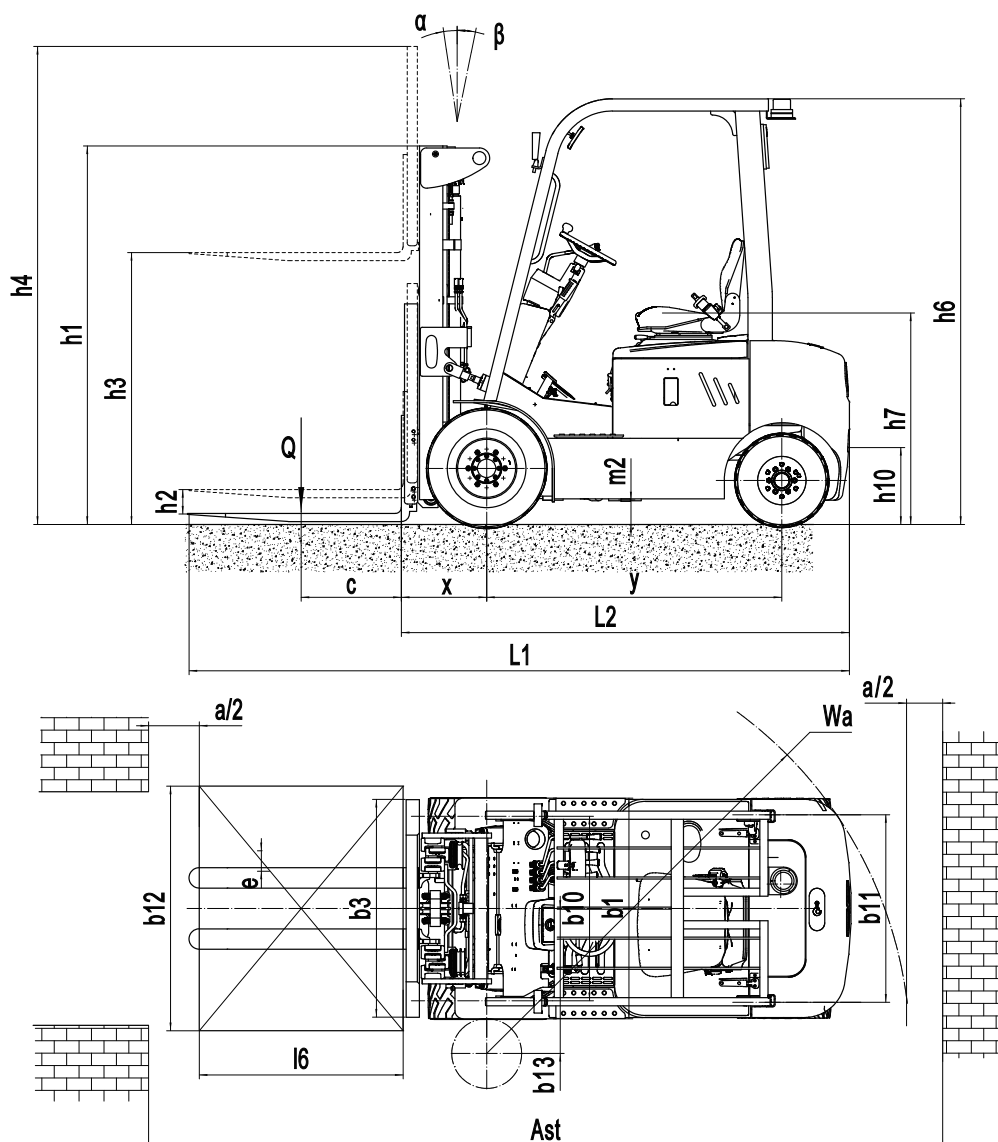


Electric Counterbalance Forklift Truck 2.0T

EFL201

| | | | | | |
|---------------------|----------------|---|---|----------------|--------------|
| Distinguishing mark | 1.1 | Manufacturer | | | EP |
| | 1.2 | Model designation | | | EFL201 |
| | 1.3 | Drive unit | | | Electric |
| | 1.4 | Operator type | | | Seated |
| | 1.5 | rated capacity | Q | kg | 2000 |
| | 1.6 | Load center distance | c | mm | 500 |
| | 1.8 | Load distance, centre of drive axle to fork | x | mm | 465.5 |
| | 1.9 | Wheelbase | y | mm | 1448 |
| | Service weight | 2.1 | Service weight | | kg |
| 2.2 | | Axle loading, laden front/rear | | kg | 4604/533 |
| 2.3 | | Axle loading, unladen front/rear | | kg | 1270/1867 |
| Tyres/chassis | 3.1 | Tyre type | | | Solid rubber |
| | 3.2 | Tyre size, front | | mm | 6.5-10 |
| | 3.3 | Tyre size, rear | | mm | 5.00-8 |
| | 3.5 | Wheels, number front/rear (x=drive wheels) | | mm | 2x/ 2 |
| | 3.6 | Tread, front | b10 | mm | 905 |
| | 3.7 | Tread, rear | b11 | mm | 920 |
| | Dimensions | 4.1 | Tilt of mast/fork carriage forward/backward | α/β | ° |
| 4.2 | | Height, mast lowered | h1 | mm | 2020 |
| 4.3 | | Free lift | h2 | mm | 100 |
| 4.4 | | Lift height | h3 | mm | 3000 |
| 4.5 | | Height, mast extended | h4 | mm | 4028 |
| 4.7 | | Height of overhead/ guard cabin | h6 | mm | 2080 |
| 4.8 | | Seat height/standing height | h7 | mm | 1060 |
| 4.12 | | Tow coupling height | h10 | mm | 370 |
| 4.19 | | Overall length | l1 | mm | 3342 |
| 4.2 | | Length to face of forks | l2 | mm | 2272 |
| 4.21 | | Overall width | b1/b2 | mm | 1080 |
| 4.22 | | Fork dimensions | s/e/l | mm | 40×122×1070 |
| 4.23 | | A,B Fork carriage class/type A, B | | | 2A |
| 4.24 | | Fork carriage width | b3 | mm | 1040 |
| 4.31 | | Ground clearance, laden, below mast | m1 | mm | 115 |
| 4.32 | | Ground clearance, center of wheelbase | m2 | mm | 120 |
| 4.34.1 | | Aisle width for pallets 1000×1200 crossways | Ast | mm | 3765.5 |
| 4.34.2 | | Aisle width for pallets 800×1200 crossways | Ast | mm | 3965.5 |
| 4.35 | | turning radius | Wa | mm | 2100 |
| Performance data | | 5.1 | Travel speed, laden/unladen | | km/ h |
| | 5.2 | Lifting speed, laden/unladen | | m/s | 0.25/ 0.3 |
| | 5.3 | Lowering speed, laden/unladen | | m/s | 0.43/ 0.45 |
| | 5.5 | Drawbar pull, laden/unladen | | N | — |
| | 5.6 | Max. drawbar pull, laden/unladen | | N | 10000 |
| | 5.8 | Max. gradeability, laden/unladen | | % | 12/15 |
| | 5.1 | Service brake | | | Hydraulic |
| | 5.11 | Parking brake | | | Mechanical |
| Electric-engine | 6.1 | Drive motor rating S2 60 min | | kW | 6 |
| | 6.2 | Lift motor rating at S3 15% | | kW | 11 |
| | 6.4 | Battery voltage/nominal capacity | | V/Ah | 80/150 |
| | 6.5 | Battery weight | | kg | — |
| | Addition data | 8.1 | Type of drive unit | | |
| 10.5 | | Steering design | | | Hydraulic |
| 10.7 | | ound pressure level at the driver's ear | | dB(A) | 70 |

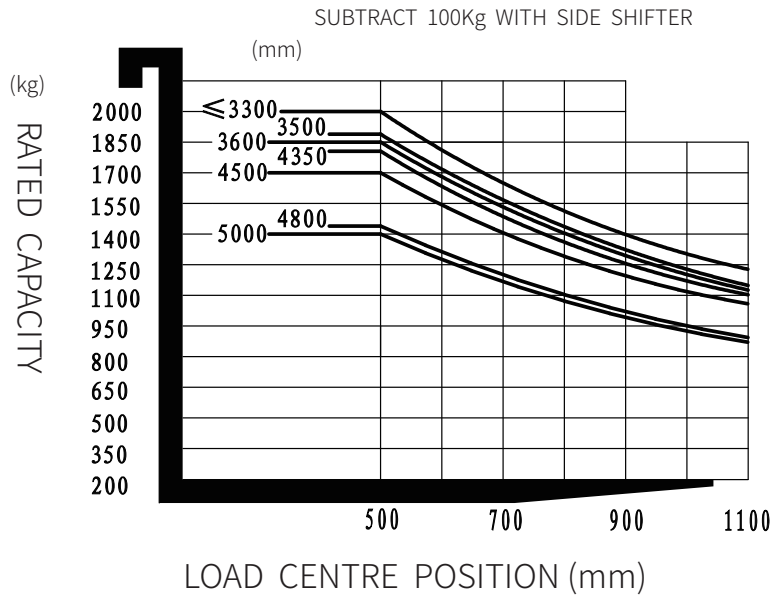
If there are improvements of technical parameters or configurations, no further notice will be given.
The diagram shown may contain non-standard configurations.



Mast Option

| Mast types | Lift height (h_3) mm | Height, mast | | | Height, Free lift(h_2) | | Load distance centre of 2.0t mm | Tilt of mast/fork | | Load capacity 500mm Load Single tyre 1.5t kg |
|------------|--------------------------------|-----------------------------------|----------------------|------------------------|----------------------------|------------------------|--|-------------------|----------------|--|
| | | Height, mast lowered(mm | Height, mast | | No shelving mm | With shelving mm | | α Deg | β Deg | |
| | | | No shelving mm | With shelving mm | | | | | | |
| 2W250 | 2500 | 1770 | 3185 | 3528 | 100 | 100 | 465.5 | 6 | 10 | 2000 |
| 2W270 | 2700 | 1870 | 3385 | 3728 | 100 | 100 | 465.5 | 6 | 10 | 2000 |
| 2W300 | 3000 | 2020 | 3685 | 4028 | 100 | 100 | 465.5 | 6 | 10 | 2000 |
| 2W330 | 3300 | 2170 | 3985 | 4328 | 100 | 100 | 465.5 | 6 | 10 | 2000 |
| 2W350 | 3500 | 2270 | 4185 | 4528 | 100 | 100 | 465.5 | 6 | 10 | 1900 |
| 2W360 | 3600 | 2320 | 4285 | 4628 | 100 | 100 | 465.5 | 6 | 10 | 1850 |
| 2F300 | 3000 | 2028 | 3485 | 4028 | 1543 | 1000 | 405 | 6 | 10 | 2000 |
| 2F330 | 3300 | 2178 | 3785 | 4328 | 1693 | 1150 | 405 | 6 | 10 | 2000 |
| 2F360 | 3600 | 2328 | 4085 | 4628 | 1843 | 1300 | 405 | 6 | 10 | 1900 |
| 3F435 | 4350 | 2035 | 5074 | 5378 | 1196 | 892 | 477.5 | 3 | 5 | 1800 |
| 3F450 | 4500 | 2085 | 5224 | 5528 | 1246 | 942 | 477.5 | 3 | 5 | 1700 |
| 3F480 | 4800 | 2185 | 5524 | 5828 | 1346 | 1042 | 477.5 | 3 | 5 | 1450 |
| 3F500 | 5000 | 2250 | 5724 | 6028 | 1411 | 1107 | 477.5 | 3 | 5 | 1400 |

RATED CAPACITIES AND LOAD CENTERES GRAPH



Option

| No. | Optional items | EFL201 |
|------|----------------------|---|
| 1.1 | Fork dimension | ○122*40*920○122*40*1070○122*40*1150○122*40*1220○122*40*1370 ○122*40*1500○122*40*1600○122*40*1700○122*40*1820 |
| 1.4 | Fork carriage width | ●1040mm○Yes and can be customized |
| 1.5 | Fork carriage height | ●1028mm○Yes and can be customized |
| 2.5 | Front wheel material | ●Solid○Non-marking solid |
| 2.6 | Rear wheel material | ●Solid○Non-marking solid |
| 2.7 | Battery capacity | ●80V150AH○80V205AH○80V280AH |
| 2.8 | Charger | ●80V35A (integrated) ○80V60A (integrated) ○80V65A○80V130A |
| 2.9 | Battery indicator | ●With time |
| 2.10 | Seat type | ●Regular○Premium○Suspension○Suspension+Seatbelt logic switch |
| 2.11 | Attachments | ●No○Built-in sideshifter○External shifter○Fork positioner |
| 2.13 | Traction pin | ●Yes |
| 2.14 | Electrostatic chain | ●Yes |
| 3.1 | Foldable fork | ●No○Yes and not customized |
| 3.5 | Front lamp | ●LED |
| 3.6 | Rear lamp | ●No○LED |
| 3.7 | Warning lamp | ●Yes |
| 3.8 | Steering lamp | ●Yes |
| 3.9 | Blue lamp | ●No○2 front○1 rear○2 front + 1 rear |
| 3.10 | Area warning lamp | ●No○Red, 1 left + 1 right |
| 3.11 | Rearview mirror | ●1 rearview mirror○Add rearview mirror on both sides |
| 3.12 | Hummer | ●Yes |
| 3.17 | OPS system | ●Yes and not customized ○No |
| 3.23 | Remote monitoring | ●Yes |
| 4.3 | Cabin | ●No○Basic half cabin○Upgrade half cabin○Full cabin |
| 4.9 | Heater | ●No○Yes and not customized |

Note: ●Standard ○ Optional - Inconformity